

InteliSENS[®]



Spark Tester Series

HF / AC / DC Spark Testers

- Quick Change Electrode
- Identify Pin Holes and Bare Patches
- Bead Chain or Brush Electrode
- Ozone Extraction Point
- Stainless Steel Body
- EN50356 / IEC62230 / UL1581 Compliant



Spark Tester Series

High Frequency Spark Testers

InteliSENS® HF Series High-Frequency Spark Testers are designed to meet International Standards for wire insulation testing. UL1581, EN50356, IEC62230.

High-Frequency Spark testers enable greatly increased production line speeds compared with mains frequency testing, especially in the case of UL1581, where the 9-cycle requirement makes the electrode length required for mains frequency testing impractical. Compared with mains frequency testing, High-Frequency testing generates an ionization cloud at a relatively low voltage, this ensures complete coverage of the wire surface. Fabricated from Stainless Steel the HF Series of Spark Testers are designed to perform in harsh environments where cooling water is often evident.



Specifications

Performance

	ST1525-HF-i4	ST1550-HF-i4	ST0505-HF(R)-i4
Minimum Diameter	0.4mm 0.16"	0.4mm 0.16"	0.4mm 0.16"
Maximum Diameter	25mm 1"	50mm 2"	5mm 0.2"
Minimum Test Voltage	1kV(rms)	1kV(rms)	0.5kV(rms)
Maximum Test Voltage	15kV(rms)	15kV(rms)	5kV(rms)
UI1581compliant line speed	3000m/min) 9800ft/min)		

Test Frequency	2.1kHz to 4.5kHz
Accuracy	Factory Calibrated within 2% kV(rms) Resolution 0.1kV(rms)
Electrode	Quick Change Bead Chain and Brush Type Electrodes
Mode	Pin Hole and Bare Patch Detection and Identification

Electrical and Operating Requirements

Power Supply 100 - 240 Vac	Power Consumption 150Watts	Operating Temperature 5° - 45° (41°F- 113°F)	Environmental Protection IP 54
-------------------------------	-------------------------------	---	-----------------------------------

AC Spark Testers - 25KV

InteliSENS[®] AC series mains frequency spark testers meet the international standards for wire insulation testing UL1581,UL2556 and EC62230. The mains frequency AC Spark Testers are designed for in-line testing of cables to detect pinhole and bare patch insulation faults. They accommodate cables up to 130 mm in diameter and outputs an AC frequency, user-adjustable EHT test voltage of up to 25 kV AC (rms).Typical applications are for the insulation testing of power and automotive cables.



Specifications

	ST2560-AC-i4	ST2560-AC(L625)-i4	ST2560-ACMW-i4	ST25130-AC-i4
Minimum Diameter	0.4mm 0.16"	0.4mm 0.16"	0.4mm 0.16"	0.4mm 0.16"
Maximum Diameter	60mm 2.36"	60mm 2.36"	60mm 2.36"	130mm 5.12"
Minimum Test Voltage	2KV(rms)	2KV(rms)	2kV(rms)	2kV(rms)
Maximum Test Voltage	25KV(rms)	25KV(rms)	25kV(rms)	25kV(rms)
UI1581compliant line speed	120m/min) 394ft/min)	250m/min) 820ft/min)	120m/min) 394ft/min)	120m/min) 394ft/min)

Test Frequency 50Hz to 60Hz

Accuracy Factory Calibrated within 3% kV(rms)
Resolution 0.1kV(rms)

Electrode Quick Change Bead Chain and Brush Type Electrodes

Mode Pin Hole and Bare Patch Detection and Identification

Electrical and Operating Requirements

Power Supply
100 - 240 Vac

Power Consumption
400Watts

Operating Temperature
5°- 45° (41°F- 113°F)

Environmental Protection
IP 54

AC Spark Testers - 35KV

InteliSENS[®] AC series mains frequency spark testers meet the international standards for wire insulation testing UL1581, UL2556 and EC62230. The mains frequency AC Spark Testers are designed for in-line testing of cables to detect pinhole and bare patch insulation faults. They accommodate cables up to 150 mm in diameter and outputs an AC frequency, user-adjustable EHT test voltage of up to 35 kV AC (rms). Typical applications are for the insulation testing of power and automotive cables.



Specifications

ST35150(R)-AC-i4

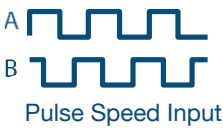
Minimum Diameter	0.4mm 0.16"
Maximum Diameter	150mm 5.91"
Minimum Test Voltage	2kV(rms)
Maximum Test Voltage	35kV(rms)
UI1581compliant line speed	193m/min) 633ft/min)

Test Frequency	50Hz to 60Hz
Accuracy	Factory Calibrated within 3% kV(rms) Resolution 0.1kV(rms)
Electrode	Quick Change Bead Chain and Brush Type Electrodes
Mode	Pin Hole and Bare Patch Detection and Identification

Electrical and Operating Requirements

Power Supply 100 - 240 Vac	Power Consumption 700Watts	Operating Temperature 5°-45° (41°F- 113°F)	Environmental Protection IP 54
-------------------------------	-------------------------------	---	-----------------------------------

Connectivity



50 V maximum pulses, 250 kHz maximum frequency, user scalable



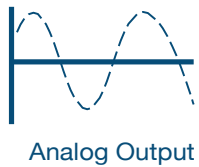
Safety interlock input to enable EHT test output voltage



1x Fixed logic input: Remote EHT output enable
2x Selectable logic inputs - HV switch, Reset, Release Relay



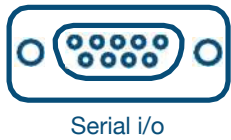
Isolated contacts, maximum rating: 50 VDC / 30 VDC / 0.5 A
Selectable function: High voltage indication, Pin-hole detected, Bare-Patch detected, Pin-Hole or Bare-Patch detected, Maximum fault count reached.



0 - 10 VDC; controls the EHT test output voltage, user scalable



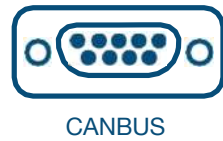
0 - 10 VDC; proportional to the measured EHT test output voltage, user scalable



RS232 Modbus Communications
USB using RS232 - USB Converter Cable
ZM4000 Printer Communications



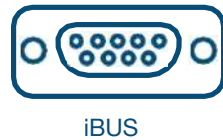
Ethernet selectable between OPC-UA and Modbus



Connects to Proton Products CDi4 Display



Connect to a PC or Mobile Device and use the Proton Products Gauge App available for iOS and Android. Ideal for gauge configuration and diagnostics.



Ethernet TCP/IP Modbus is the Default Communication. Connect to a PLC using ProfiBus, ProfiNet, or EtherNet I/P.

Accessories

Electrode



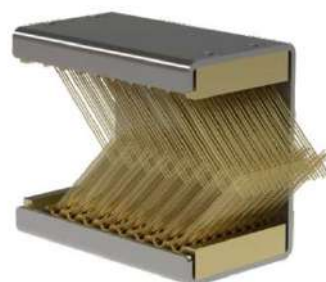
Vertical Bead Chain Electrode
(ST1525-HF/ST1025-DC)
Part no. 00048MC031



Bead Chain Electrode L100
(ST1525-HF/DC)
Part no. 00048MC277



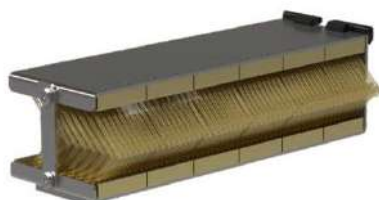
Bead Chain Electrode L140
(ST1525-HF)
Part no. 00048MC953



Brush Electrode
(ST1525-HF/ST1025-DC)
Part no. 00048MC018



Bead Chain Electrode
L100 (ST1550-HF)
Part no. 00048MC986



Brush Electrode-M30
(ST1525-HFMW
/ST1025-DCMW)
Part no. 00048MC029



Bead Chain Electrode
Center Opening
(ST2560-AC)
Part no. 00048MC570



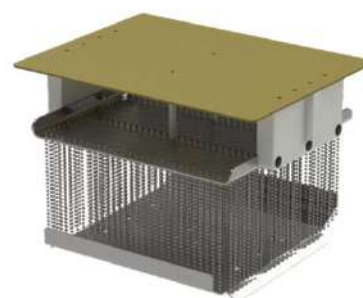
Bead Chain Electrode
Center Opening
(ST2560-AC)
Part no. 00048MC570



Bead Chain Electrode
Center Opening L300
(ST25130-AC)
Part no. 00048MC581



Bead Chain Electrode
Centre Opening
(ST35150-AC)
Part no. 00048MC558



Bead Electrode
(ST2560-ACMW)
Part no. 00048MC422

Accessories

Display



CDI3-ST
Part no. 00049MC001



Panel Mounting Kit (CDI3)
Part no. 00049MC033



Gauge Mounting Bracket
(CDI3-ST)
Part no. 00049MC038



CAN 9DD Cable
Part no. Length Dependent



USB-RS232(1.8m) Cable
Part no. GP00000624

Accessories

Power



Mains Cable (CN)
Part no.00001CM615



Mains Cable (USA)
Part no.00002CM502



Mains cable (European)
Part no.00003CM506

Alarm and Report



A1 Alarm Unit
Part no.00025MC001



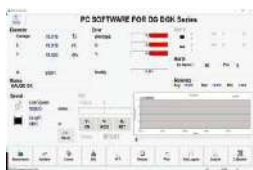
M16AP Cable
Part no.Length Dependent

Stands and Guards



HST3
Part no.00009MC550

Visual Software



PCIS-DGK
Part no.00057SW015



Rs232 1.8m Cable (USB)
Part no.GP00000624



Proton Products
MDIS Mobile App



Locations

USA HEAD OFFICE:

Proton Products Inc.
9272 Jeronimo Rd #110 Irvine,
CA 92618
United States
E-mail: sales@protonproducts.us

GLOBAL HEAD OFFICE:

Proton Products International Ltd.
10 Aylesbury End, Beaconsfield
Buckinghamshire HP91LW
England
Email: sales@protonproducts.com

ASIA HEAD OFFICE:

Proton Products Chengdu Ltd.
No.111, CheCheng West 2nd Road,
LongQuanYi District, ChengDu,
SiChuan Province 610100,
China
E-mail: sales@protonproducts.cn

EUROPEAN HEAD OFFICE:

Proton Products Europe N.V. Terschelt
Business Park Koeweideblock 2/C13
B-1785 Merchtem
Belgium
E-mail: sales@protonproducts.eu

THAILAND AGENT OFFICE :

Diamond International Co., Ltd.
555/46 Moo 4, Mahasawat,
Bangkruai, Nonthaburi 11130,
Thailand.

Mr. Kamnat Chanyanimit
Tel: +66 2038 7144
Mobile: +66 8 9936 6895

Email: sales@diamond-inter.com
Website: www.diamond-inter.com

