

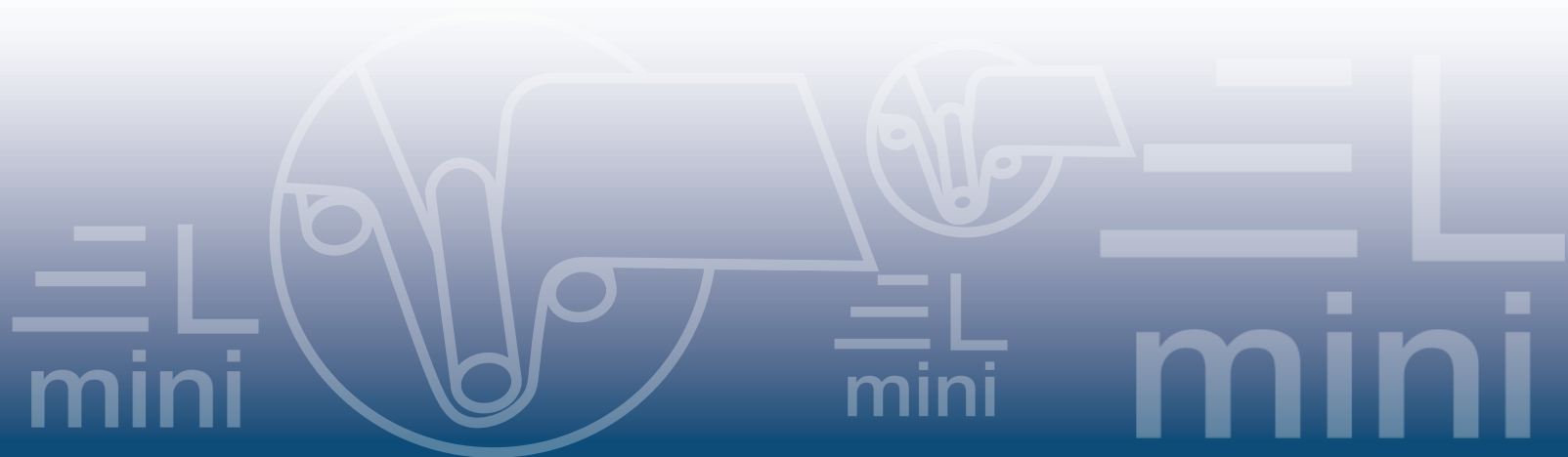
# InteliSENS<sup>®</sup>

SLmini-i4 SERIES



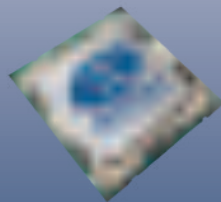
## Non-Contact Laser Doppler Speed & Length Measurement

- No Slip, No Wear, No Marking
- Incredibly Small and Easy to Install
- Pulse Outputs like your Encoder
- Stand Alone Device
- Integrate to Machine PLC
- Industry 4.0 Data Communications



# InteliSENS

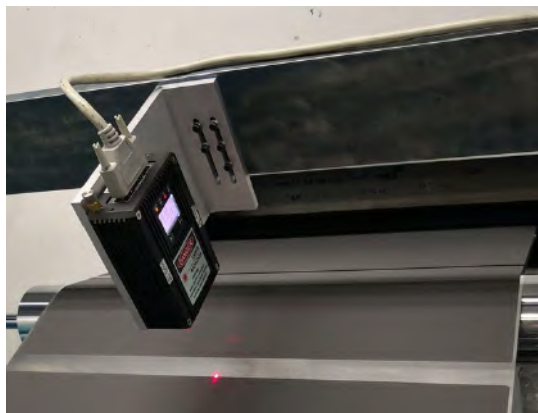
## SLmini-i4 SERIES



### Non-Contact Laser Doppler Speed & Length Measurement

The InteliSENS SLmini-i4 Non-Contact Speed and Length measurement gauge is ideal for flat surface products in “roll to roll” or “cut to length” processes. Paper, Film, Foil, Wovens, Non-Wovens, Textiles, Roofing, Sidings, Gypsum Board, Print Registration, and Repeat Length are just a few application examples. Manufacturing processes, where speed measurement is critical for drive control or where length measurement is critical for product quality, will benefit from the increased accuracy of Laser Doppler Speed and Length Measurement.

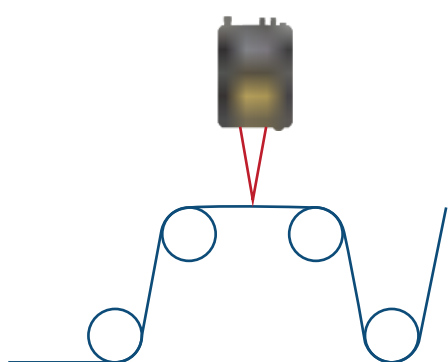
Focused on connectivity the SLmini-i4 Smart Sensor with 32bit communications comes preloaded with Profibus, Profinet, and Ethernet Industrial Protocol for your PLC connection. Modbus, OPC-UA, RS232, RS485, and WiFi round out a wide range of digital communications for your Industry 4.0 Solution.



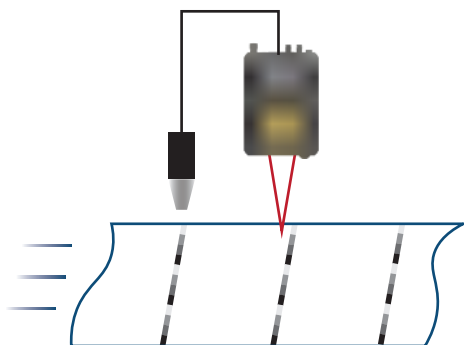
# Applications



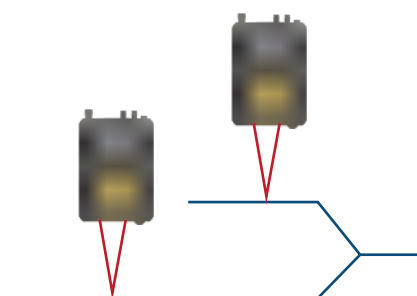
Speed Measurement



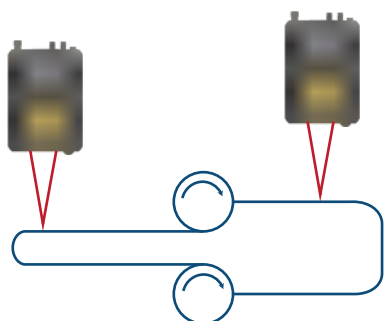
Print Registration



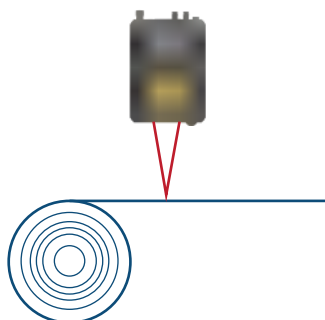
Speed Balancing



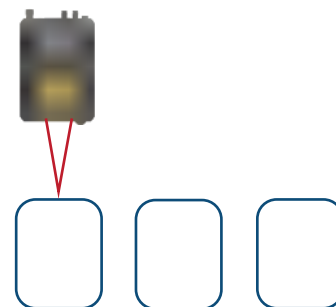
Speed Ratio (Elongation)



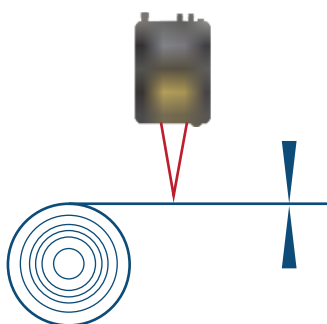
Speed Length Measurement



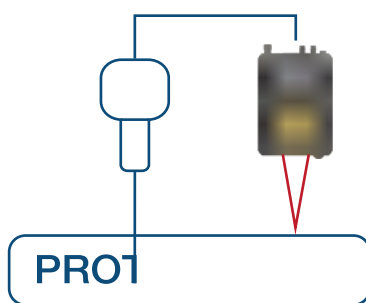
Part Length Measurement



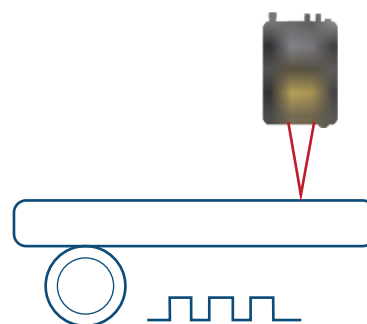
Cut-To-Length Control



Inkjet Printer Control



Encoder Calibration

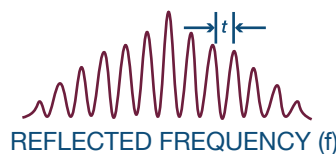
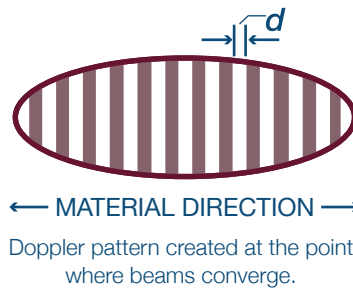
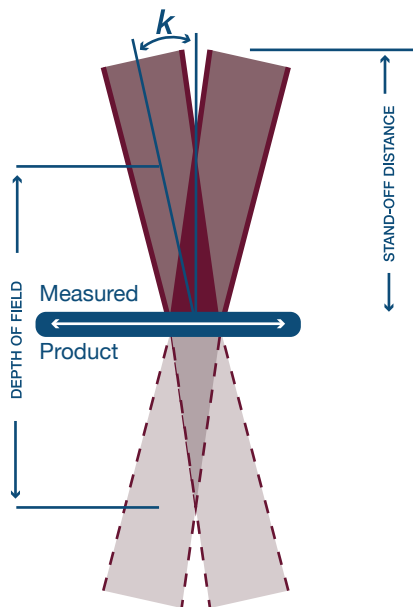


# Operating Principle

The IntelliSENS SLmini-i4 Series Laser Doppler Speed and Length gauge illuminates the measured surface with an interference pattern created by the intersection of two laser beams. The alternating bright and dark fringe pattern modulates the light scattered by the object with a frequency proportional to the object's speed. This scattered light is detected by a photodiode and the electrical signal is digitally processed to determine the frequency and hence the speed. Object length is then calculated by integrating the speed measurement with respect to time.

The IntelliSENS SLRmini-i4 Series Laser Doppler Speed and Length gauge extends the measurement principle of the SLmini-i4 Series by using a high-frequency Bragg cell modulator to illuminate the measured surface with a scanning interference pattern, which generates an oscillating light signal even when the object is stationary. The direction of motion is determined by whether the scattered light frequency is higher or lower than the stationary frequency.

## LASER DOPPLER VELOCIMETRY



$$d = \frac{\lambda}{2 \sin k}$$

Fringe spacing is a function of laser wavelength and beam angle

$$f = \propto \frac{v}{d}$$

Doppler frequency is proportional to speed/fringe spacing.

$$L = \int_0^T v dt$$

Speed is integrated to measure length

Class 3B Visible Laser.

Wavelength 650 - 670 nm, typically 658 nm with a beam diameter of 3mm (0.12")

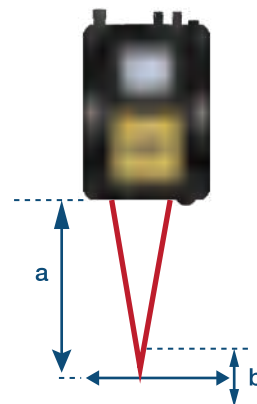
Total emitted power 40mW. Power Density at Stand Off Distance 50mW/cm<sup>2</sup>



# Specifications

SLmini and SLRmini Non-Contact Laser Doppler Speed and Length Gauges are specified with “a” Stand off Distance” and “b” Depth of Field.

The object to be measured must be within the “Depth of Field” which is centered around the “Stand off Distance”.



## Performance

	SLmini 1220-i4	SLmini 3060-i4	SLRmini 1220-i4	SLRmini 3060-i4
Stand Off Distance	120mm 4.74"	300mm 11.81"	120mm 4.74"	300mm 11.81"
Depth of Field	20mm 0.79"	60mm 2.36"	20mm 0.79"	60mm 2.36"
Minimum Speed	0.1 m/min 0.33 ft/min	0.25 m/min 0.82 ft/min	0 m/min 0 ft/min	0 m/min 0 ft/min
Maximum Speed	2000 m/min 6562 ft/min	5000 m/min 16404 ft/min	± 2000 m/min ± 6562 ft/min	± 5000 m/min ± 16404 ft/min

Accuracy	Factory Calibrated to better than 0.05%. Repeatability of 0.02%
Measurement	Maximum Acceleration Rate of 500m/s <sup>2</sup> (1640ft/s <sup>2</sup> ) Measurement Rate Up to 24,400/sec
Units	Speed Measurement selectable m/min, ft/min, yd/min Length Measurement selectable m, ft, inch, yd
Mode	Normal (Continuous Length), Batch Length
Object Detection	Automatic Detection and Object Present

## Electrical and Operating Requirements

Power Supply  
15 - 30 Vdc

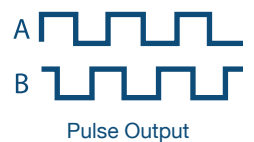
Power Consumption  
15 Watts

Operating Temperature  
5°C- 40°C-(41°F-104°F)\*

Environmental Protection  
IP 67

\*See Accessories for High Temperature Options

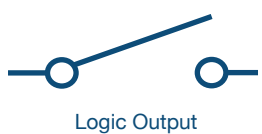
# Connectivity



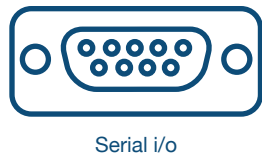
Default Output 5vdc or User Input to 24vdc  
Max Maximum Frequency 2MHz Pulse Rate Selectable - Pulse/Meter or Meter/Pulse Configurable as 6 x Single End or 3 Quadrature or 3 Differential.  
Non Isolated from Gauge Head, Opto Isolated from the PSU-BOB i4



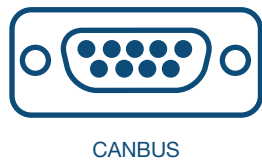
Maximum Input Voltage 24Vdc  
2 x Fixed logic Inputs - Laser Enable and Shutter Enable  
3 x Selectable logic Inputs - Reverse Direction, Length Reset, Display Hold, Speed Hold, Total Length Reset, End of Reel



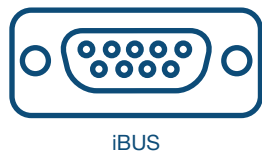
Maximum Voltage 30Vdc, Current 100mA.  
N-Channel MOSFET pull-down (for connection to user supplied onto isolated relay)  
1 x Fixed Logic Output - Shutter Status  
3 x Selectable logic outputs - Gauge Ok, Measuring Speed, Preset Length 1, Preset Length 2, Good Readings Low, Object Detected, Gauge Hot.



RS232 MODBUS RTU, PROTON ASCII code or Label Printer  
USB using RS232 - USB Converter Cable  
RS485 MODBUS RTU, PROTON ASCII code (Not available with PROFIBUS)



Connects to Proton Products CDi4 Display



Connect to a PLC using PROFIBUS, PROFINET, or EtherNet I/P, data update rate up to 500/sec. Flexible Data Configuration, Big Endian, Little Endian



Ethernet selectable between OPC-UA, Modbus, Industrial Protocol IP, and Profinet



Connect to a PC or Mobile Device using WiFi 2.4G and use the Proton Products Gauge App available for iOS and Android. Ideal for gauge configuration and diagnostics

# Industry 4.0



More than 200 Data Words are available to communicate with your Industry 4.0 Solution. Data Words are divided into distinct function groups to make it easy to select the ones you want.

Gauge ID Data Words	Model Number, Serial Number, Firmware APP version, Firmware Core Version, Firmware Date
Calibration Data	Last Calibration Date, Days Since Last Calibration, Total Run Time, Calibration Alarm
Validation Data Words	SNR, Signal Amplitude, Good Readings, FFT Amplitude
Wired Network Info	IP Address, Netmask, Gateway
WiFi Network Info	IP Address, Netmask, Gateway, SSID
Measurement Data	Instant Speed, Average Speed, Batch Length, Total Length
Diagnostic Data	Laser Temperature, APD Temperature, Laser ON/OFF Cycles, Max/ Min Case Temperature

## Smart Sensors Enable Smart Factories

*"Industry 4.0 the Fourth Industrial Revolution is real. In its various shapes, forms, and definitions, it's happening, accelerating around the world, and Proton Products is an active player in this movement. A Smart Sensor is a Bridge between the Physical World (Measurement of Products and Processes) and the Digital World (MES, ERP Factory Management Systems). The more connected these worlds are, the more informed we become, improving our decision processes which ultimately enable us to reach our goals."*

*Proton Products Inc.*

# Accessories

## Display



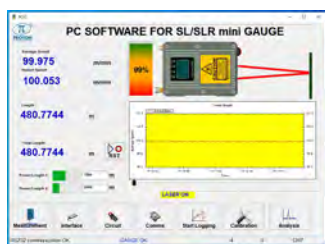
CDi4  
Part No. 00049MC021



CDi4 Panel Mount  
Part No. 00049MC043



CAN 9DD Cable  
Part No. Length Dependent



PCIS-SL/SLR mini  
Part No. 00050SW001



USB-RS232\_1.8m Cable  
Part No. GP00000624



Proton MDIS  
Part No.

## Power



PSU-BOB-SL i4  
Part No. 00060MC050



Mains Cable  
Part No. 00002CM502



DB44 Cable  
Part No. Length Dependent

## Stands and Guards



Base Plate  
Part No. 00050MC042



3D ADJ Plate  
Part No. 00050MC044



Vibrating Reduction Kit  
Part No. 00050MC043

# Accessories

## Protection



Air Wipe  
Part No. 00050MC034



Beam Shroud 1220  
Part No. 00050MC033



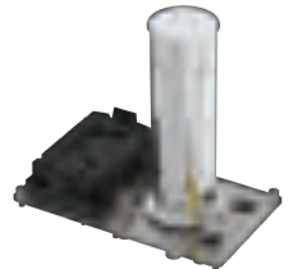
Beam Shroud 3060  
Part No. 00050MC037



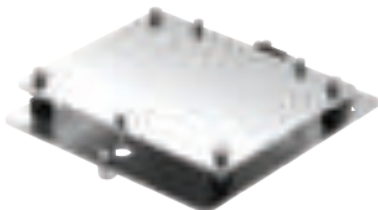
S-BOX mini  
Part No. 00050MC019



S-BOX Panel  
Part No. 00046MC048



S-BOX Panel Vortex  
Part No. 00046MC039



S-Box mini 3D ADJ Plate  
Part No. 00050MC020



Air Accelerator  
Part No. 00060MC038



Air Filter  
Part No. 00043MC048

## Cooling



TC300 Temperature Controller  
Part No. 00039MC002



Mains Cable  
Part No. 00002CM502

# Accessories

## Alarm & Report



A1 Alarm Unit  
Part No. 00025MC001



M16AP Cable  
Part No. 00025CB003



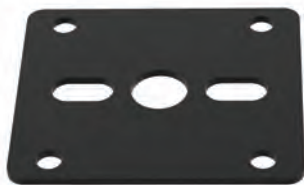
Zebra Label Printer  
Part No. 00043MC033



RS232 9DD Cable  
Part No. Length Dependent

---

## Accessories



Aperture Plate  
Part No. 00050MC281



Stainless Steel Replacement Kit  
Part No. 00050MC891

# Locations

## USA HEAD OFFICE:

Proton Product Inc.  
1590 S Coast Hwy, Unit 13  
Laguna Beach, CA 92651  
United States  
E-mail: [sales@protonproducts.us](mailto:sales@protonproducts.us)

## GLOBAL HEAD OFFICE:

Proton Products International Ltd.  
10 Aylesbury End,  
Beaconsfield Buckinghamshire  
England  
Email: [sales@protonproducts.com](mailto:sales@protonproducts.com)

## ASIA HEAD OFFICE:

Proton Products Chengdu Ltd.  
No.111, CheCheng West 2nd Road,  
LongQuanYi District, ChengDu, SiChuan  
Province 610100,  
China  
E-mail: [sales@protonproducts.cn](mailto:sales@protonproducts.cn)

## EUROPEAN HEAD OFFICE:

Proton Products Europe N.V.  
Terspelt Business Park  
Koeweideblock 2/C13  
B-1785 Merchtem  
Belgium  
E-mail: [sales@protonproducts.eu](mailto:sales@protonproducts.eu)

## THAILAND AGENT OFFICE :

Diamond International Co., Ltd.  
555/46 Moo 4, Mahasawat,  
Bangkruai, Nonthaburi 11130,  
Thailand.

Mr. Kamnat Chanyanimit  
Tel: +66 2038 7144  
Mobile: +66 8 9936 6895

Email: [sales@diamond-inter.com](mailto:sales@diamond-inter.com)  
Website: [www.diamond-inter.com](http://www.diamond-inter.com)

