



DIAMETER GAUGE

PROMET PDK Series



≡ FAST

HIGH ACCURACY, NON-CONTACT MEASUREMENT
Measure continuous processes with 100% quality inspection
MEASURE, CONTROL, INSPECT, ALARM, REPORT

INTRODUCTION

The PROMET DUAL diameter gauges are SUPER FAST, with scan rates of 1000 scans/s , providing outstanding product quality supervision. Using 2 LED light sources, high-speed digital signal processing (DSP) and specialized optical design technology to MEASURE, CONTROL INSPECT, ALARM and REPORT diameter, as well as Surface Quality Defects (SQD) as they happen, reducing customer complaints and improving your reputation as a quality product supplier.

The 2 LED light sources of the Dual-axis diameter gauges cover the Complete Circumference of the product, and any immediate change in the diameter is detected by the CCD optical receiver, Measuring, Controlling, Alarming and Reporting the diameter as well as the height, length and location of lumps and necks (if SSFD is purchased) along and around the product.

Extremely easy to install, integrate and use, the fast diameter gauge can be used as a stand-alone device or integrated to the machine PLC. Audio/Visual Alarm, Fault Printer and Datalogging PC Software are available to complement the diameter gauge, closing the loop on Quality Control.

Applications include production processes such as Wire Drawing, Braiding, Cable Insulating and Jacketing, Rewinding and Coiling, Rubber and Plastic Extrusion Processes for Hose, Tube and Pipe production.

NON-CONTACT MEASUREMENT

- 1,000 Measurement / Axis / Sec
- No Moving Parts
- 2 Axis Gauges
- Ethernet IP/WiFi
- Feedback Control*
- Lump & Neck Detection
- SPC*
- FFT*
- Excellent Value: Low Cost of Ownership



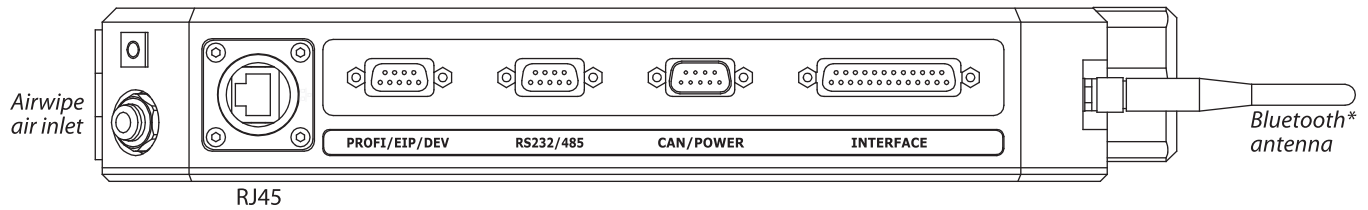
* Optional extra

■ **Pipe** ■ **Tube** ■ **Hose** ■ **Wire** ■ **Cable**

scan rates: 1,000 scans/s

CONNECT

Complementing the standard communications inputs and outputs is a wide range of factory fitted optional communications to meet your needs.
Connect to your existing indicator / display device, PLC or PC.



Standard communications

CANBUS **Ethernet TCP IP**



RS232 **RS422** **RS485**

*Bluetooth not available in Europe

Optional communications



Modbus



Analogue



DISPLAY and REPORT

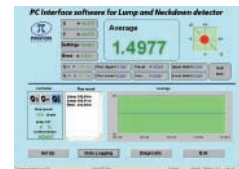
AiG2: Interface, display



Event printer



PCIS: interface/ logging software



ACCESSORIES

The IntelisENS™ PDK Series has a number of accessories that complement the gauge head. The AiG-2 can be connected directly on the gauge head or use one of the CAN cables to position the display in the production line control panel. If you are making several connections, such as for alarms and line speed input, the PSU-BOB makes it simple and easy to wire up. Consult your local Proton Products Representative to discuss which accessories will suit your requirements.

PSU-BOB

Power supply and break-out-box



PSU-UNI

Power supply for DB25 socket



Terminal Strip

Simplify wiring for input and output connections



SPECIFICATIONS

InteliSENS™
PDK Series

PDK 60XY

| | |
|---------------------------------------|---|
| Number of axes | 2 axes |
| Scan rate | 1000 |
| Cumulative scan rate | 2000 |
| Accuracy (µm) | ±(5µm + 0.01% of object diameter) |
| Output resolution | 1µm |
| Measurement units (user configurable) | millimetres (line speed: millimetres / minute, length: metres) inches (line speed: feet / minute, length: feet) |
| Optical gate width | 64mm |
| Minimum object size | 0.3mm |
| Maximum object size | 60mm |
| Light source | |
| Gauge weight | 12KG |
| Power requirement | 15~28 VDC, 30W max; 85~274 VAC, 40W max (with AiG2 display unit) |
| Temperature range | +5~+45°C (41~113°F) |
| Statistics | Maximum, minimum, mean, standard deviation, Cp, Cpk (option) |
| feedback controller | Proportional Integral feedback controller (option) |
| SPC | Statistical Process Control automatic set point for PI feedback controller (requires PI feedback controller option) |
| FFT | Fast Fourier Transform analysis for amplitude and frequency of periodic diameter variations (option) |
| SMFD | Single Measurement Flaw Detection (Lump and Neck detection) (option) |

INTELISENS™ STANDARD INTERFACES

| | | |
|-------------------|--|---|
| 2x digital inputs | User configurable function | Reset, Print Activation |
| | Maximum input voltage | 24 VDC |
| 4x relay outputs | User configurable function | Gauge OK, Upper tolerances exceeded, Lower tolerances exceeded,(SMFD) |
| | Isolated contact rating | maximum 50 VDC / 30 VAC / 0.5 A |
| | Required for optional PI feedback controller operation | |
| Line speed inputs | Analogue input | 0 - 10 Vdc, user scalable |
| | Speed pulse input | 250 kHz max frequency, 30 V or 50 V max pulses (on two distinct inputs) |
| Communication | RS-232*, RS-422, RS-485, CAN-bus**, Ethernet | |

InteliSENS™ OPTIONAL INTERFACES (Must be specified for installation at time of manufacture, cannot be retrofitted.)

| | |
|---------------------|--|
| 3x Analogue outputs | ±10 Vdc output of diameters or errors, user scalable |
| Communication | Choice of any one of: Bluetooth* or WiFi* |
| | Choice of any one of: PROFIBUS, EtherNet/IP or DeviceNET |

CONTACT

ASIA

Proton Products Chengdu Ltd
Tianfu Software Park G3-401,
No.1800 Central YiZhou Avenue,
Chengdu, Sichuan, 610041, CHINA
Tel : + 86 288 439 3112
Fax : + 86 288 437 0880

EUROPE

Proton Products Europe N.V.
Nieuwbaan 81, B-1785,
Merchtem-Peizegem,
BELGIUM.
Tel +32 (0) 52 466 311
Fax: +32 (0) 52 466 313

USA

Weber & Scher,
P.O. Box 366, 1231 US Highway
22 East, Lebanon Borough,
New Jersey, USA.
Tel +1 (908) 236 8484,
Fax +1 (908) 236 7001

AGENT

PT Maruli Teknik Indonesia.
Ruko STA Niaga Blok A No.12,
Sentul City, Citaringgul, Babkan Madang,
Kabupaten, Bogor 16810,
Indonesia.
Mr. Harry Marulitua Hutabarat
Email : Maruliteknikindonesia@gmail.com
Cell : +62 852 6193 8882